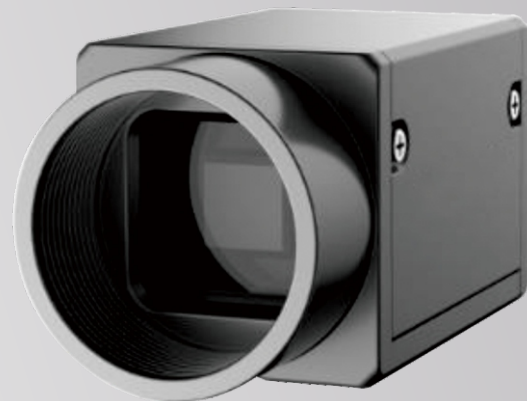


POMEAS Gigabit Industry Camera

Feature:

1. 6MP(3072x2048) high resolution
2. High efficiency transmission speed, 1000 Mbits/s
3. High SNR, low power consumption
4. Compatible with Gige Vision Standard



| | |
|-----------------------|---|
| Code | PMS-0600C14CSC |
| Sensor | 1/1.8" CMOS |
| Resolution | 3072x2048 |
| Pixel size | 2.4 μ m x 2.4 μ m |
| Frame rate | 18(Mono)/8(Color) |
| Mono/color | Mono/color |
| Data path | Mono: Mono8/10/10p/12/12p Color: Mono8/10/12, RGB8, Bayer BG8/10/10p/12/12p YUV422 8 YUV422 8 UYVY |
| GPIO | 6-pin Hirose GPIO connector for power, and I/O, 1 opto-isolated input, 1 opto-isolated output, 2 bi-directional I/O pins |
| Trigger | Multiple trigger type |
| Synchronization model | Ext. Trigger, Gi |
| Power consumption | <3.5W@12VDC |
| Supply Voltage | Power range 5-15V, Support PoE |
| Size | 29mmx29mmx42mm |
| Weight | <68g |
| Lens mount | C-Mount |
| Operating Temp. | Operating Temp.: 0-50°C, Storage Temp.: -30-70°C |
| Qualified standard | CE, FCC, RoHS |
| Drive program | MVS or from a Third party software that support GigE Vision |
| Operating System | Windows XP/7/832/64 bits |
| Standard | GigE Vision |